

PROVIDENCE, R. I.  
CITY ENGINEER'S OFFICE  
STREET LINE DEPT.

Aug 19, 1887  
013152

Providence R. I.  
This plat accompanies  
our report of this date.

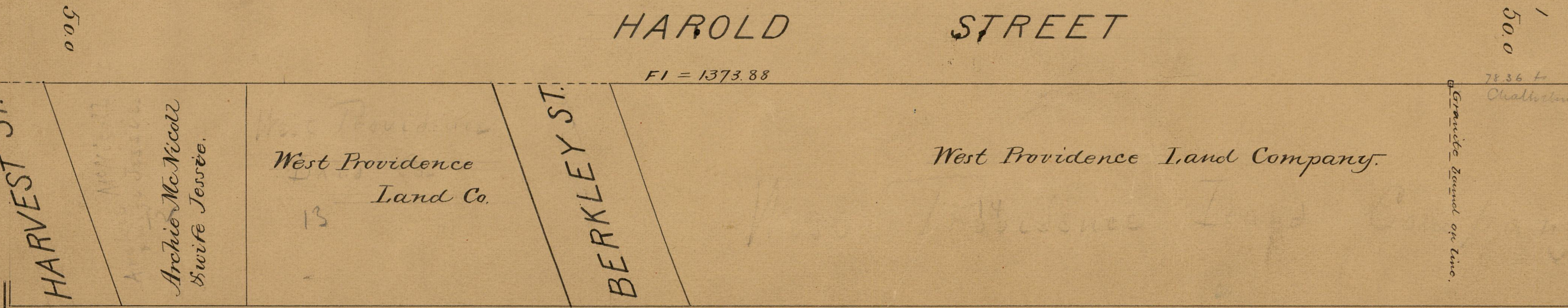
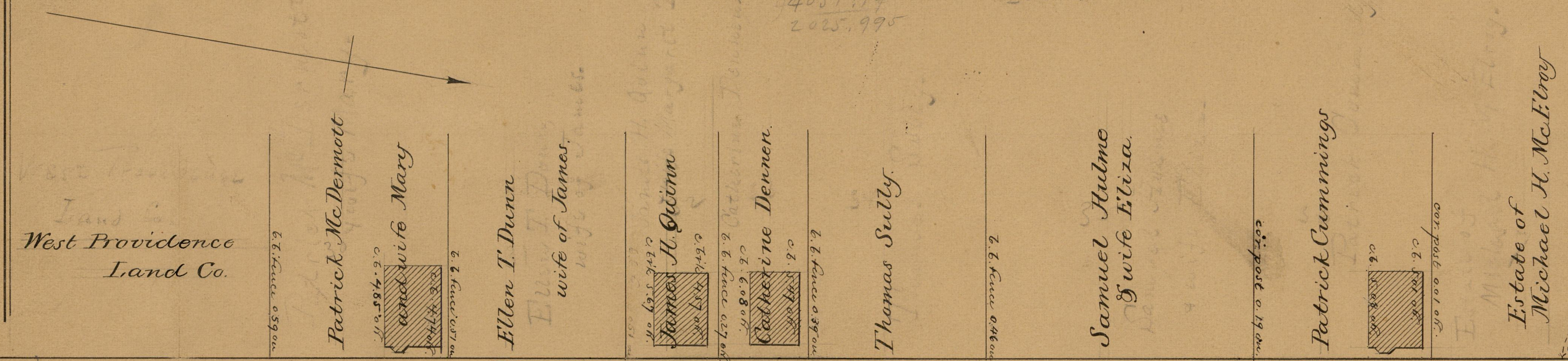
# PLAT OF HAROLD STREET

FROM VALLEY ST. TO CHALKSTONE AVE.

IN THREE SHEETS

SCALE 50 FEET PER INCH.

653.57	498.27
1373.42	10.08
2026.99	142.77
2025.00	1373.88
4051.99	2025.00
2025.995	



From measurements taken July, 1910, by E.S. McG. it is evident that this bound has been moved since the notes in H.E. Sherman's Field Bk. 10-70 were taken. See section plan 53-23

OFFICE No.	9370
DRAWER	83
SHEET	A-53

1027.19  
940.33  
78.36